

# SAILMAX TYRE CATALOGUE

KEERUN TIRE CO., LTD.

This version is applied for BACH HO PCS., LTD; VIETNAM only



**With special design and compound for only  
use of trailer or semi-trailer.**

**All these tyres in these catalogue cannot be  
used for lorries truck and buses.**



KEERUN TIRE (DEZHOU) CO., LTD  
NO 399, NORTH KAIYUAN WEAT AVENUE, LELING CITY,  
DEZHOU CITY, SHANDONG PROVINCE, CHINA North

KEERUN TIRE (RIZHAO) CO., LTD  
GAOZE TOWN, WULIAN COUNTY, RIZHAO CITY,  
SHANDONG PROVINCE, CHINA

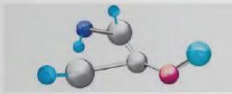
<https://www.keeruntire.net>



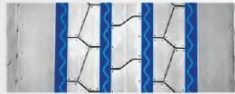


# SS992

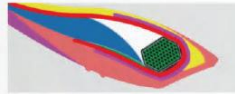
SUITABLE FOR ONLY TRAILER OR SEMI-TRAILER  
ON MID-LONG DISTANCE NATIONAL HIGHWAY TRANSPORTATION



Low heat super anti-wear formula



Excellent water evacuation performance



Good fatigue resistance



Ultra-high strength stiffness steel belt structure

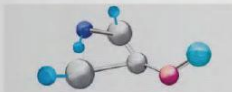
| SIZE    | PLY RATING | TREAD DEPTH (MM) | STANDARD RIM | LOAD SINGLE / DUAL | LOAD INDEX | SPEED RATE | AIR PRESSURE (KPA) |
|---------|------------|------------------|--------------|--------------------|------------|------------|--------------------|
| 12R22.5 | 18PR       | 18.0             | 9.00         | 3550/3250          | 152/149    | L          | 930                |

*\*This product cannot be used for lorries truck and buses.*

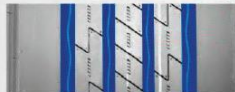


# SS968/ SS968X

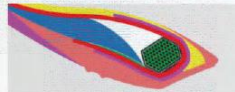
SUITABLE FOR ONLY TRAILER OR SEMI-TRAILER  
ON MID-LONG DISTANCE NATIONAL HIGHWAY TRANSPORTATION



Low heat super anti-wear formula



Excellent water evacuation performance



Good fatigue resistance



Irregular wear resistance

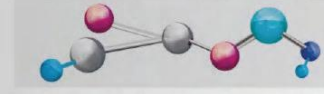
| SIZE    | PLY RATING | TREAD DEPTH (MM) | STANDARD RIM | LOAD SINGLE / DUAL | LOAD INDEX | SPEED RATE | AIR PRESSURE (KPA) |
|---------|------------|------------------|--------------|--------------------|------------|------------|--------------------|
| 12R22.5 | 18PR       | 17.0             | 9.00         | 3550/3250          | 152/149    | L          | 930                |

*\*This product cannot be used for lorries truck and buses.*



# ST988 / ST988X

SUITABLE FOR ONLY TRAILER OR SEMI-TRAILER  
ON MID-LONG DISTANCE NATIONAL HIGHWAY TRANSPORTATION



Low heat super anti-wear formula



Excellent water evacuation performance



Evenly distributes grounding pressure, low heat generation

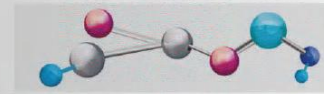
| SIZE    | PLY RATING | TREAD DEPTH (MM) | STANDARD RIM | LOAD SINGLE / DUAL | LOAD INDEX | SPEED RATE | AIR PRESSURE (KPA) |
|---------|------------|------------------|--------------|--------------------|------------|------------|--------------------|
| 12R22.5 | 18PR       | 15.5             | 9.00         | 3550/3250          | 152/149    | L          | 930                |

*\*This product cannot be used for lorries truck and buses.*



# SA966

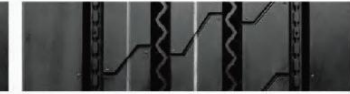
SUITABLE FOR ONLY TRAILER OR SEMI-TRAILER  
ON MID-LONG DISTANCE NATIONAL HIGHWAY TRANSPORTATION



Low rolling resistance formula design



Excellent water evacuation performance



Evenly distributes grounding pressure, irregular wear resistance

| SIZE        | PLY RATING | TREAD DEPTH (MM) | STANDARD RIM | LOAD SINGLE / DUAL | LOAD INDEX | SPEED RATE | AIR PRESSURE (KPA) |
|-------------|------------|------------------|--------------|--------------------|------------|------------|--------------------|
| 275/80R22.5 | 18PR       | 15.0             | 8.25         | 3250/3000          | 149/146    | L          | 900                |

*\*This product cannot be used for lorries truck and buses.*

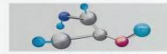




# ST966



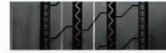
SUITABLE FOR ONLY TRAILER OR SEMI-TRAILER  
ON MID-LONG DISTANCE NATIONAL HIGHWAY TRANSPORTATION



Low rolling resistance formula design



Excellent water evacuation performance



Evenly distributes grounding pressure, irregular wear resistance

| SIZE        | PLY RATING | TREAD DEPTH (MM) | STANDARD RIM | LOAD SINGLE / DUAL | LOAD INDEX | SPEED RATE | AIR PRESSURE (kpa) |
|-------------|------------|------------------|--------------|--------------------|------------|------------|--------------------|
| 11R22.5     | 16PR       | 15.5             | 8.25         | 3000/2725          | 146/143    | M          | 830                |
| 11R22.5     | 18PR       | 15.5             | 8.25         | 3250/3000          | 149/146    | L          | 930                |
| 11R24.5     | 16PR       | 15.5             | 8.25         | 3250/3000          | 149/146    | L          | 830                |
| 12R22.5     | 18PR       | 16.5             | 9.00         | 3550/3250          | 152/149    | L          | 930                |
| 215/75R17.5 | 16PR       | 12.0             | 6.00         | 1750/1600          | 127/124    | L          | 830                |
| 225/80R17.5 | 18PR       | 13.0             | 6.75         | 1550/1500          | 123/122    | L          | 700                |
| 235/75R17.5 | 16PR       | 13.0             | 6.75         | 2000/1850          | 132/129    | L          | 830                |
| 245/70R19.5 | 16PR       | 14.0             | 7.50         | 2180/2060          | 135/133    | L          | 830                |
| 255/70R22.5 | 16PR       | 13.0             | 7.50         | 2500/2300          | 140/137    | L          | 830                |
| 265/70R19.5 | 16PR       | 14.0             | 7.50         | 2500/2360          | 140/138    | L          | 775                |
| 265/70R19.5 | 18PR       | 14.0             | 7.50         | 2725/2575          | 143/141    | J          | 850                |
| 275/70R22.5 | 18PR       | 15.0             | 8.25         | 3000/2725          | 146/143    | L          | 900                |
| 275/80R22.5 | 18PR       | 15.0             | 8.25         | 3250/3000          | 149/146    | L          | 900                |
| 295/60R22.5 | 18PR       | 16.0             | 9.00         | 3350/3075          | 150/147    | L          | 900                |
| 295/75R22.5 | 16PR       | 15.0             | 9.00         | 3000/2725          | 146/143    | L          | 830                |
| 295/80R22.5 | 18PR       | 15.5             | 9.00         | 3550/3250          | 152/149    | L          | 900                |
| 315/80R22.5 | 20PR       | 15.0             | 9.00         | 4125/3750          | 157/154    | L          | 900                |

*\*This product cannot be used for lorries truck and buses.*



# ST955



SUITABLE FOR ONLY TRAILER OR SEMI-TRAILER  
ON MID-LONG DISTANCE NATIONAL HIGHWAY TRANSPORTATION



Using low heat generation and high anti-wear formula design



Excellent water evacuation performance



Excellent grip

| SIZE    | PLY RATING | TREAD DEPTH (MM) | STANDARD RIM | LOAD SINGLE / DUAL | LOAD INDEX | SPEED RATE | AIR PRESSURE (KPA) |
|---------|------------|------------------|--------------|--------------------|------------|------------|--------------------|
| 12R22.5 | 18PR       | 15.5             | 9.00         | 3550/3250          | 152/149    | L          | 930                |

*\*This product cannot be used for lorries truck and buses.*



# SS998



SUITABLE FOR ONLY TRAILER OR SEMI-TRAILER  
ON MID-SHORT DISTANCE TRANSPORTATION ON FIRST-CLASS HIGHWAY OR ROAD IN GOOD CONDITION



Widened tread design



Excellent loading capacity



Excellent water evacuation performance



Excellent anti-wear performance

| SIZE        | PLY RATING | TREAD DEPTH (MM) | STANDARD RIM | LOAD SINGLE / DUAL | LOAD INDEX | SPEED RATE | AIR PRESSURE (kpa) |
|-------------|------------|------------------|--------------|--------------------|------------|------------|--------------------|
| 11R22.5     | 18PR       | 17.0             | 8.25         | 3250/3000          | 149/146    | L          | 930                |
| 12R22.5     | 18PR       | 18.0             | 9.00         | 3550/3250          | 152/149    | L          | 930                |
| 11.00R20    | 18PR       | 16.5             | 8.00         | 3550/3250          | 152/149    | K          | 930                |
| 12.00R20    | 20PR       | 16.5             | 8.50         | 4000/3650          | 156/153    | K          | 900                |
| 12.00R20    | 22PR       | 16.5             | 8.50         | 4000/3650          | 156/153    | K          | 900                |
| 13R22.5     | 20PR       | 17.0             | 9.75         | 4000/3650          | 156/153    | K          | 930                |
| 295/80R22.5 | 18PR       | 16.0             | 9.00         | 3550/3250          | 152/149    | L          | 900                |
| 315/80R22.5 | 20PR       | 16.0             | 9.00         | 4125/3750          | 157/154    | L          | 900                |
| 385/65R22.5 | 20PR       | 16.5             | 11.75        | 4500               | 160        | K          | 900                |
| 385/65R22.5 | 24PR       | 16.5             | 11.75        | 5000               | 164        | K          | 930                |

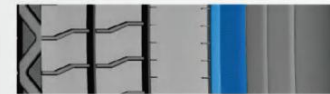
*\*This product cannot be used for lorries truck and buses.*



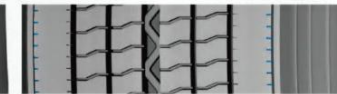
# ST805



SUITABLE FOR ONLY TRAILER OR SEMI-TRAILER  
ON MID-LONG DISTANCE NATIONAL HIGHWAY TRANSPORTATION



Evenly distributes grounding pressure, irregular wear resistance



Excellent heat dissipation performance

| SIZE    | PLY RATING | TREAD DEPTH (MM) | STANDARD RIM | LOAD SINGLE / DUAL | LOAD INDEX | SPEED RATE | AIR PRESSURE (KPA) |
|---------|------------|------------------|--------------|--------------------|------------|------------|--------------------|
| 11R22.5 | 16PR       | 10.5             | 8.25         | 3000/2725          | 146/143    | M          | 830                |
| 11R22.5 | 18PR       | 10.5             | 8.25         | 3250/3000          | 149/146    | M          | 930                |

*\*This product cannot be used for lorries truck and buses.*

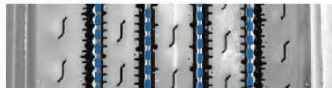
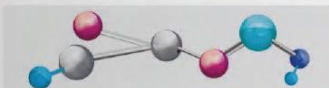




# ST901



SUITABLE FOR ONLY TRAILER OR SEMI-TRAILER  
ON MID-LONG DISTANCE NATIONAL HIGHWAY TRANSPORTATION



Low rolling resistance and anti-wear formula design

Excellent water evacuation performance

Low heat generation

| SIZE        | PLY RATING | TREAD DEPTH (MM) | STANDARD RIM | LOAD SINGLE / DUAL | LOAD INDEX | SPEED RATE | AIR PRESSURE (KPA) |
|-------------|------------|------------------|--------------|--------------------|------------|------------|--------------------|
| 285/75R24.5 | 16PR       | 14.5             | 8.25         | 3075/2800          | 147/144    | L          | 830                |
| 295/80R22.5 | 18PR       | 15.5             | 9.00         | 3550/3250          | 152/149    | L          | 900                |
| 315/80R22.5 | 20PR       | 14.5             | 9.00         | 4125/3750          | 157/154    | K          | 900                |

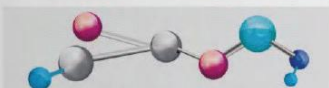
*\*This product cannot be used for lorries truck and buses.*



# ST905



SUITABLE FOR ONLY TRAILER OR SEMI-TRAILER  
ON MID-LONG DISTANCE NATIONAL HIGHWAY TRANSPORTATION



Low rolling resistance formula design

Excellent anti-clamping stone and self-cleaning performance

Low heat generation

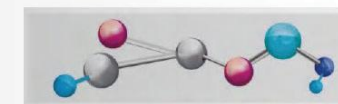
| SIZE    | PLY RATING | TREAD DEPTH (MM) | STANDARD RIM | LOAD SINGLE / DUAL | LOAD INDEX | SPEED RATE | AIR PRESSURE (KPA) |
|---------|------------|------------------|--------------|--------------------|------------|------------|--------------------|
| 11R22.5 | 16PR       | 15.0             | 8.25         | 3000/2725          | 146/143    | M          | 830                |
| 11R22.5 | 18PR       | 15.0             | 8.25         | 3250/3000          | 149/146    | M          | 930                |

*\*This product cannot be used for lorries truck and buses.*

# SA811



SUITABLE FOR ONLY TRAILER OR SEMI-TRAILER  
ON MID-LONG DISTANCE NATIONAL HIGHWAY TRANSPORTATION



Excellent anti-clamping stone and self-cleaning performance



Evenly distributes grounding pressure, irregular wear resistance

| SIZE        | PLY RATING | TREAD DEPTH (MM) | STANDARD RIM | LOAD SINGLE / DUAL | LOAD INDEX | SPEED RATE | AIR PRESSURE (KPA) |
|-------------|------------|------------------|--------------|--------------------|------------|------------|--------------------|
| 11R22.5     | 16PR       | 15.0             | 8.25         | 3000/2725          | 146/143    | M          | 830                |
| 11R22.5     | 18PR       | 15.0             | 8.25         | 3250/3000          | 149/146    | L          | 830                |
| 11R24.5     | 16PR       | 15.0             | 8.25         | 3250/3000          | 149/146    | M          | 830                |
| 295/75R22.5 | 16PR       | 15.0             | 9.00         | 3000/2725          | 146/143    | L          | 830                |

*\*This product cannot be used for lorries truck and buses.*





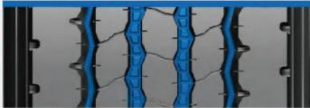
# SA01



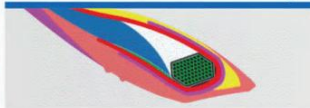
SUITABLE FOR ONLY TRAILER OR SEMI-TRAILER  
ON MID-LONG DISTANCE NATIONAL HIGHWAY TRANSPORTATION



Anti-wear performance



Anti-clamping stone performance



Excellent grip performance

| SIZE        | PLY RATING | TREAD DEPTH (MM) | STANDARD RIM | LOAD SINGLE/DUAL | LOAD INDEX | SPEED RATE | AIR PRESSURE (KPA) |
|-------------|------------|------------------|--------------|------------------|------------|------------|--------------------|
| 215/75R17.5 | 16PR       | 13.0             | 6.00         | 1750/1600        | 127/124    | L          | 830                |
| 225/70R19.5 | 16PR       | 14.0             | 6.75         | 1900/1800        | 130/128    | L          | 830                |
| 235/75R17.5 | 16PR       | 13.0             | 6.75         | 2000/1850        | 132/129    | L          | 830                |

*\*This product cannot be used for lorries truck and buses.*



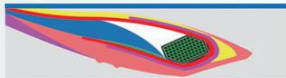
# SD827



SUITABLE FOR ONLY TRAILER OR SEMI-TRAILER  
ON MID-LONG DISTANCE NATIONAL HIGHWAY TRANSPORTATION



Good loading performance



Excellent durability



Good irregular wear resistance

| SIZE    | PLY RATING | TREAD DEPTH (MM) | STANDARD RIM | LOAD SINGLE / DUAL | LOAD INDEX | SPEED RATE | AIR PRESSURE (kpa) |
|---------|------------|------------------|--------------|--------------------|------------|------------|--------------------|
| 12R22.5 | 18PR       | 20.5             | 9.00         | 3550/3250          | 152/149    | L          | 930                |

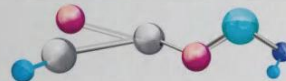
*\*This product cannot be used for lorries truck and buses.*



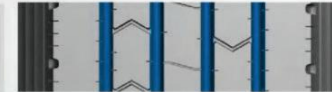
# ST967



SUITABLE FOR ONLY TRAILER OR SEMI-TRAILER  
ON MID-LONG DISTANCE NATIONAL HIGHWAY TRANSPORTATION



Low rolling resistance and anti-wear formula design



Excellent water evacuation performance



Irregular wear resistance

| SIZE        | PLY RATING | TREAD DEPTH (MM) | STANDARD RIM | LOAD SINGLE / DUAL | LOAD INDEX | SPEED RATE | AIR PRESSURE (KPA) |
|-------------|------------|------------------|--------------|--------------------|------------|------------|--------------------|
| 295/80R22.5 | 18PR       | 14.5             | 9.00         | 3550/3250          | 152/149    | M          | 900                |
| 315/80R22.5 | 20PR       | 14.0             | 9.00         | 4125/3750          | 157/154    | L          | 900                |

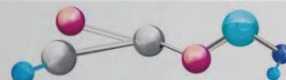
*\*This product cannot be used for lorries truck and buses.*



# SD826



SUITABLE FOR ONLY TRAILER OR SEMI-TRAILER  
ON MID-LONG DISTANCE NATIONAL HIGHWAY TRANSPORTATION



Widened tread design



Good heat dissipation performance

| SIZE    | PLY RATING | TREAD DEPTH (MM) | STANDARD RIM | LOAD SINGLE / DUAL | LOAD INDEX | SPEED RATE | AIR PRESSURE (KPA) |
|---------|------------|------------------|--------------|--------------------|------------|------------|--------------------|
| 12R22.5 | 18PR       | 21.0             | 9.00         | 3550/3250          | 152/149    | K          | 930                |

*\*This product cannot be used for lorries truck and buses.*





# SD398



SUITABLE FOR ONLY TRAILER OR SEMI-TRAILER  
ON MID-LONG DISTANCE NATIONAL HIGHWAY TRANSPORTATION



Good puncture resistance

Good heat dissipation performance

| SIZE        | PLY RATING | TREAD DEPTH (MM) | STANDARD RIM | LOAD SINGLE / DUAL | LOAD INDEX | SPEED RATE | AIR PRESSURE (KPA) |
|-------------|------------|------------------|--------------|--------------------|------------|------------|--------------------|
| 11R22.5     | 16PR       | 23.0             | 8.25         | 3000/2725          | 146/143    | L          | 830                |
| 11R22.5     | 18PR       | 23.0             | 8.25         | 3250/3000          | 149/146    | L          | 930                |
| 11R24.5     | 16PR       | 23.0             | 8.25         | 3250/3000          | 149/146    | K          | 830                |
| 295/75R22.5 | 16PR       | 23.0             | 9.00         | 3000/2725          | 146/143    | K          | 830                |

*\*This product cannot be used for lorries truck and buses.*



# SD803



SUITABLE FOR ONLY TRAILER OR SEMI-TRAILER  
ON MID-LONG DISTANCE NATIONAL HIGHWAY TRANSPORTATION



| SIZE        | PLY RATING | TREAD DEPTH (MM) | STANDARD RIM | LOAD SINGLE / DUAL | LOAD INDEX | SPEED RATE | AIR PRESSURE (KPA) |
|-------------|------------|------------------|--------------|--------------------|------------|------------|--------------------|
| 11R22.5     | 16PR       | 20.5             | 8.25         | 3000/2725          | 146/143    | M          | 830                |
| 11R22.5     | 18PR       | 20.5             | 8.25         | 3250/3000          | 149/146    | M          | 930                |
| 11R24.5     | 16PR       | 20.5             | 8.25         | 3250/3000          | 149/146    | M          | 830                |
| 295/75R22.5 | 16PR       | 20.0             | 9.00         | 3000/2725          | 146/143    | L          | 830                |

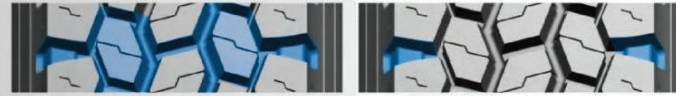
*\*This product cannot be used for lorries truck and buses.*



# SD817



SUITABLE FOR ONLY TRAILER OR SEMI-TRAILER  
ON MID-LONG DISTANCE NATIONAL HIGHWAY TRANSPORTATION



Good puncture resistance

Good heat dissipation performance

| SIZE    | PLY RATING | TREAD DEPTH (MM) | STANDARD RIM | LOAD SINGLE / DUAL | LOAD INDEX | SPEED RATE | AIR PRESSURE (KPA) |
|---------|------------|------------------|--------------|--------------------|------------|------------|--------------------|
| 11R22.5 | 16PR       | 20.5             | 8.25         | 3000/2725          | 146/143    | L          | 830                |
| 11R22.5 | 18PR       | 20.5             | 8.25         | 3250/3000          | 149/146    | K          | 930                |
| 11R24.5 | 16PR       | 20.5             | 8.25         | 3250/3000          | 149/146    | K          | 830                |

*\*This product cannot be used for lorries truck and buses.*



# SD919



SUITABLE FOR ONLY TRAILER OR SEMI-TRAILER  
ON MID-LONG DISTANCE NATIONAL HIGHWAY TRANSPORTATION



Long driving mileage

High saturation pattern design

Optimized tire grounding marks prevents irregular wear

| SIZE        | PLY RATING | TREAD DEPTH (MM) | STANDARD RIM | LOAD SINGLE / DUAL | LOAD INDEX | SPEED RATE | AIR PRESSURE (KPA) |
|-------------|------------|------------------|--------------|--------------------|------------|------------|--------------------|
| 295/80R22.5 | 18PR       | 19.5             | 9.00         | 3550/3250          | 152/149    | M          | 900                |

*\*This product cannot be used for lorries truck and buses.*

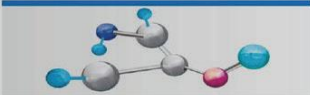




# SD807



SUITABLE FOR ONLY TRAILER OR SEMI-TRAILER  
ON MID-LONG DISTANCE NATIONAL HIGHWAY TRANSPORTATION



Low heat formula design



Good heat dissipation performance

| SIZE        | PLY RATING | TREAD DEPTH (MM) | STANDARD RIM | LOAD SINGLE / DUAL | LOAD INDEX | SPEED RATE | AIR PRESSURE (KPA) |
|-------------|------------|------------------|--------------|--------------------|------------|------------|--------------------|
| 295/80R22.5 | 18PR       | 18.5             | 9.00         | 3550/3250          | 152/149    | K          | 900                |
| 315/80R22.5 | 20PR       | 20.5             | 9.00         | 4125/3750          | 157/154    | K          | 900                |

*\*This product cannot be used for lorries truck and buses.*



# SD867



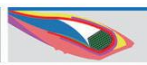
SUITABLE FOR ONLY TRAILER OR SEMI-TRAILER  
ON MID-LONG DISTANCE NATIONAL HIGHWAY TRANSPORTATION



Excellent resistance of groove cracking



Excellent anti-clamping stone and self-cleaning performance



Excellent durability

| SIZE        | PLY RATING | TREAD DEPTH (MM) | STANDARD RIM | LOAD SINGLE / DUAL | LOAD INDEX | SPEED RATE | AIR PRESSURE (kpa) |
|-------------|------------|------------------|--------------|--------------------|------------|------------|--------------------|
| 245/70R17.5 | 18PR       | 15.5             | 7.50         | 2120/2000          | 134/132    | K          | 900                |
| 225/70R19.5 | 16PR       | 15.5             | 6.75         | 1900/1800          | 130/128    | L          | 830                |
| 225/70R19.5 | 18PR       | 15.5             | 6.75         | 2000/1900          | 132/130    | K          | 900                |
| 265/70R19.5 | 16PR       | 16.0             | 7.50         | 2500/2360          | 140/138    | L          | 775                |
| 265/70R19.5 | 18PR       | 16.0             | 7.50         | 2725/2575          | 143/141    | J          | 850                |
| 215/75R17.5 | 18PR       | 15.5             | 6.00         | 2180/2060          | 135/133    | J          | 850                |
| 235/75R17.5 | 18PR       | 15.5             | 6.75         | 2725/2575          | 143/141    | J          | 875                |
| 225/80R17.5 | 18PR       | 14.0             | 6.75         | 1550/1500          | 123/122    | L          | 700                |
| 315/80R22.5 | 20PR       | 20.0             | 9.00         | 4125/3750          | 157/154    | K          | 900                |

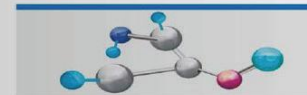
*\*This product cannot be used for lorries truck and buses.*



# SD909/SD909+/SD909++



SUITABLE FOR ONLY TRAILER OR SEMI-TRAILER  
ON MID-LONG DISTANCE NATIONAL HIGHWAY TRANSPORTATION



Widened tread design



Good heat dissipation performance

| SIZE        | PLY RATING | TREAD DEPTH (MM) | STANDARD RIM | LOAD SINGLE / DUAL | LOAD INDEX | SPEED RATE | AIR PRESSURE (KPA) |
|-------------|------------|------------------|--------------|--------------------|------------|------------|--------------------|
| 295/80R22.5 | 18PR       | 18.5             | 9.00         | 3550/3250          | 152/149    | K          | 900                |
| 315/80R22.5 | 20PR       | 22.0             | 9.00         | 4125/3750          | 157/154    | K          | 900                |

*\*This product cannot be used for lorries truck and buses.*



# SS979/SS979X



SUITABLE FOR ONLY TRAILER OR SEMI-TRAILER  
ON MID-LONG DISTANCE NATIONAL HIGHWAY TRANSPORTATION



Low rolling resistance and super anti-wear formula



Excellent water evacuation performance



Excellent distributes grounding pressure, good irregular wear resistance

| SIZE    | PLY RATING | TREAD DEPTH (MM) | STANDARD RIM | LOAD SINGLE / DUAL | LOAD INDEX | SPEED RATE | AIR PRESSURE (kpa) |
|---------|------------|------------------|--------------|--------------------|------------|------------|--------------------|
| 12R22.5 | 18PR       | 17.0             | 9.00         | 3550/3250          | 152/149    | L          | 930                |

*\*This product cannot be used for lorries truck and buses.*

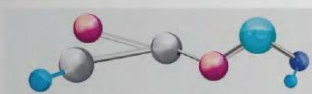




# ST917



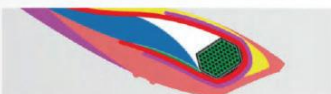
SUITABLE FOR ONLY TRAILER OR SEMI-TRAILER  
ON MID-LONG DISTANCE NATIONAL HIGHWAY TRANSPORTATION



Low heat formula design



Optimized groove bottom design



Strengthen bead design

| SIZE        | PLY RATING | TREAD DEPTH (MM) | STANDARD RIM | LOAD SINGLE / DUAL | LOAD INDEX | SPEED RATE | AIR PRESSURE (KPA) |
|-------------|------------|------------------|--------------|--------------------|------------|------------|--------------------|
| 295/80R22.5 | 18PR       | 16.5             | 9.00         | 3550/3250          | 152/149    | L          | 900                |

*\*This product cannot be used for lorries truck and buses.*



# SA878



SUITABLE FOR ONLY TRAILER OR SEMI-TRAILER  
ON MID-LONG DISTANCE NATIONAL HIGHWAY TRANSPORTATION



Widened tread design



Excellent durability



High strength stiffness steel belt structure

| SIZE    | PLY RATING | TREAD DEPTH (MM) | STANDARD RIM | LOAD SINGLE / DUAL | LOAD INDEX | SPEED RATE | AIR PRESSURE (KPA) |
|---------|------------|------------------|--------------|--------------------|------------|------------|--------------------|
| 12R22.5 | 18PR       | 17.5             | 9.00         | 3550/3250          | 152/149    | L          | 930                |

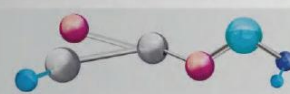
*\*This product cannot be used for lorries truck and buses.*



# SA859



SUITABLE FOR ONLY TRAILER OR SEMI-TRAILER  
ON MID-LONG DISTANCE NATIONAL HIGHWAY TRANSPORTATION



Ultra-high mileage



Irregular wear resistance



Excellent durability

| SIZE    | PLY RATING | TREAD DEPTH (MM) | STANDARD RIM | LOAD SINGLE / DUAL | LOAD INDEX | SPEED RATE | AIR PRESSURE (KPA) |
|---------|------------|------------------|--------------|--------------------|------------|------------|--------------------|
| 12R22.5 | 18PR       | 17.0             | 9.00         | 3550/3250          | 152/149    | L          | 930                |

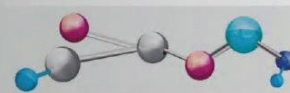
*\*This product cannot be used for lorries truck and buses.*



# SA866



SUITABLE FOR ONLY TRAILER OR SEMI-TRAILER  
ON MID-LONG DISTANCE NATIONAL HIGHWAY TRANSPORTATION



Ultra-high mileage



Irregular wear resistance



Excellent durability

| SIZE    | PLY RATING | TREAD DEPTH (MM) | STANDARD RIM | LOAD SINGLE / DUAL | LOAD INDEX | SPEED RATE | AIR PRESSURE (KPA) |
|---------|------------|------------------|--------------|--------------------|------------|------------|--------------------|
| 12R22.5 | 18PR       | 17.0             | 9.00         | 3550/3250          | 152/149    | L          | 930                |

*\*This product cannot be used for lorries truck and buses.*





# SA899



SUITABLE FOR ONLY TRAILER OR SEMI-TRAILER  
ON MID-LONG DISTANCE NATIONAL HIGHWAY TRANSPORTATION

| SIZE    | PLY RATING | TREAD DEPTH (MM) | STANDARD RIM | LOAD SINGLE / DUAL | LOAD INDEX | SPEED RATE | AIR PRESSURE (KPA) |
|---------|------------|------------------|--------------|--------------------|------------|------------|--------------------|
| 12R22.5 | 18PR       | 17.0             | 9.00         | 3550/3250          | 152/149    | L          | 930                |

*\*This product cannot be used for lorries truck and buses.*



# ST999



SUITABLE FOR ONLY TRAILER OR SEMI-TRAILER  
ON MID-LONG DISTANCE NATIONAL HIGHWAY TRANSPORTATION

| SIZE    | PLY RATING | TREAD DEPTH (MM) | STANDARD RIM | LOAD SINGLE / DUAL | LOAD INDEX | SPEED RATE | AIR PRESSURE (KPA) |
|---------|------------|------------------|--------------|--------------------|------------|------------|--------------------|
| 12R22.5 | 18PR       | 15.5             | 9.00         | 3550/3250          | 152/149    | L          | 930                |

*\*This product cannot be used for lorries truck and buses.*



# SD828



SUITABLE FOR ONLY TRAILER OR SEMI-TRAILER  
ON MID-LONG DISTANCE NATIONAL HIGHWAY TRANSPORTATION

| SIZE    | PLY RATING | TREAD DEPTH (MM) | STANDARD RIM | LOAD SINGLE / DUAL | LOAD INDEX | SPEED RATE | AIR PRESSURE (kpa) |
|---------|------------|------------------|--------------|--------------------|------------|------------|--------------------|
| 12R22.5 | 18PR       | 20.5             | 9.00         | 3550/3250          | 152/149    | L          | 930                |

*\*This product cannot be used for lorries truck and buses.*



# SA809X



SUITABLE FOR ONLY TRAILER OR SEMI-TRAILER  
ON MID-LONG DISTANCE NATIONAL HIGHWAY TRANSPORTATION

| SIZE    | PLY RATING | TREAD DEPTH (MM) | STANDARD RIM | LOAD SINGLE / DUAL | LOAD INDEX | SPEED RATE | AIR PRESSURE (KPA) |
|---------|------------|------------------|--------------|--------------------|------------|------------|--------------------|
| 12R22.5 | 18PR       | 16.0             | 9.00         | 3550/3250          | 152/149    | L          | 930                |

*\*This product cannot be used for lorries truck and buses.*





# SA819X



SUITABLE FOR ONLY TRAILER OR SEMI-TRAILER  
ON MID-LONG DISTANCE NATIONAL HIGHWAY TRANSPORTATION

| SIZE    | PLY RATING | TREAD DEPTH (MM) | STANDARD RIM | LOAD SINGLE / DUAL | LOAD INDEX | SPEED RATE | AIR PRESSURE (KPA) |
|---------|------------|------------------|--------------|--------------------|------------|------------|--------------------|
| 12R22.5 | 18PR       | 17.0             | 9.00         | 3550/3250          | 152/149    | L          | 930                |

*\*This product cannot be used for lorries truck and buses.*



# SA515



SUITABLE FOR ONLY TRAILER OR SEMI-TRAILER  
ON MID-LONG DISTANCE NATIONAL HIGHWAY TRANSPORTATION

| SIZE     | PLY RATING | TREAD DEPTH (MM) | STANDARD RIM | LOAD SINGLE / DUAL | LOAD INDEX | SPEED RATE | AIR PRESSURE (KPA) |
|----------|------------|------------------|--------------|--------------------|------------|------------|--------------------|
| 12.00R24 | 20PR       | 14.5             | 8.50         | 4500/4125          | 160/157    | K          | 900                |

*\*This product cannot be used for lorries truck and buses.*



# SA888



SUITABLE FOR ONLY TRAILER OR SEMI-TRAILER  
ON MID-LONG DISTANCE NATIONAL HIGHWAY TRANSPORTATION

| SIZE    | PLY RATING | TREAD DEPTH (MM) | STANDARD RIM | LOAD SINGLE / DUAL | LOAD INDEX | SPEED RATE | AIR PRESSURE (kpa) |
|---------|------------|------------------|--------------|--------------------|------------|------------|--------------------|
| 12R22.5 | 18PR       | 20.0             | 9.00         | 3550/3250          | 152/149    | L          | 930                |

*\*This product cannot be used for lorries truck and buses.*



# SA516



SUITABLE FOR ONLY TRAILER OR SEMI-TRAILER  
ON MID-LONG DISTANCE NATIONAL HIGHWAY TRANSPORTATION

| SIZE     | PLY RATING | TREAD DEPTH (MM) | STANDARD RIM | LOAD SINGLE / DUAL | LOAD INDEX | SPEED RATE | AIR PRESSURE (KPA) |
|----------|------------|------------------|--------------|--------------------|------------|------------|--------------------|
| 12.00R24 | 20PR       | 14.5             | 8.50         | 4500/4125          | 160/157    | K          | 900                |

*\*This product cannot be used for lorries truck and buses.*





# SA511



SUITABLE FOR ONLY TRAILER OR SEMI-TRAILER  
ON MID-LONG DISTANCE NATIONAL HIGHWAY TRANSPORTATION

| SIZE        | PLY RATING | TREAD DEPTH (MM) | STANDARD RIM | LOAD SINGLE / DUAL | LOAD INDEX | SPEED RATE | AIR PRESSURE (KPA) |
|-------------|------------|------------------|--------------|--------------------|------------|------------|--------------------|
| 315/80R22.5 | 20PR       | 14.0             | 9.00         | 4125/3750          | 157/154    | K          | 900                |

*\*This product cannot be used for lorries truck and buses.*



# ST610



SUITABLE FOR ONLY TRAILER OR SEMI-TRAILER  
ON MID-LONG DISTANCE NATIONAL HIGHWAY TRANSPORTATION

| SIZE        | PLY RATING | TREAD DEPTH (MM) | STANDARD RIM | LOAD SINGLE / DUAL | LOAD INDEX | SPEED RATE | AIR PRESSURE (KPA) |
|-------------|------------|------------------|--------------|--------------------|------------|------------|--------------------|
| 385/65R22.5 | 20PR       | 14.5             | 11.75        | 4500               | 160        | K          | 900                |

*\*This product cannot be used for lorries truck and buses.*



# SS611



SUITABLE FOR ONLY TRAILER OR SEMI-TRAILER  
ON MID-LONG DISTANCE NATIONAL HIGHWAY TRANSPORTATION

| SIZE        | PLY RATING | TREAD DEPTH (MM) | STANDARD RIM | LOAD SINGLE / DUAL | LOAD INDEX | SPEED RATE | AIR PRESSURE (KPA) |
|-------------|------------|------------------|--------------|--------------------|------------|------------|--------------------|
| 315/80R22.5 | 20PR       | 14.0             | 9.00         | 4125/3750          | 157/154    | L          | 900                |

*\*This product cannot be used for lorries truck and buses.*



# SA513



SUITABLE FOR ONLY TRAILER OR SEMI-TRAILER  
ON MID-LONG DISTANCE NATIONAL HIGHWAY TRANSPORTATION

| SIZE        | PLY RATING | TREAD DEPTH (MM) | STANDARD RIM | LOAD SINGLE / DUAL | LOAD INDEX | SPEED RATE | AIR PRESSURE (KPA) |
|-------------|------------|------------------|--------------|--------------------|------------|------------|--------------------|
| 315/80R22.5 | 20PR       | 14.0             | 9.00         | 4125/3750          | 157/154    | K          | 900                |

*\*This product cannot be used for lorries truck and buses.*



# SS996



SUITABLE FOR ONLY TRAILER OR SEMI-TRAILER  
ON MID-LONG DISTANCE NATIONAL HIGHWAY TRANSPORTATION

| SIZE        | PLY RATING | TREAD DEPTH (MM) | STANDARD RIM | LOAD SINGLE / DUAL | LOAD INDEX | SPEED RATE | AIR PRESSURE (KPA) |
|-------------|------------|------------------|--------------|--------------------|------------|------------|--------------------|
| 315/80R22.5 | 22PR       | 16.0             | 9.00         | 4500/4125          | 160/157    | K          | 930                |
| 315/70R22.5 | 20PR       | 16.0             | 9.00         | 3750/3450          | 154/151    | L          | 930                |
| 385/65R22.5 | 24PR       | 16.5             | 11.75        | 5000               | 164        | K          | 930                |

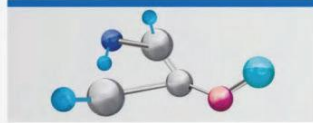
*\*This product cannot be used for lorries truck and buses.*



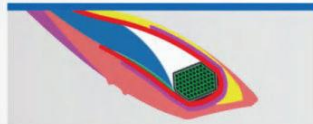


## SA818/SA818A

SUITABLE FOR ONLY TRAILER OR SEMI-TRAILER  
ON MID-LONG DISTANCE NATIONAL HIGHWAY TRANSPORTATION



High anti-wear formula design



Optimized bead design

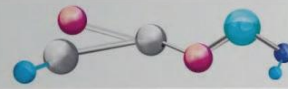
| SIZE        | PLY RATING | TREAD DEPTH (MM) | STANDARD RIM | LOAD SINGLE/DUAL | LOAD INDEX | SPEED RATE | AIR PRESSURE (KPA) |
|-------------|------------|------------------|--------------|------------------|------------|------------|--------------------|
| 11R22.5     | 16PR       | 16.0             | 8.25         | 3000/2725        | 146/143    | M          | 830                |
| 11R22.5     | 18PR       | 16.0             | 8.25         | 3250/3000        | 149/146    | L          | 930                |
| 12R22.5     | 18PR       | 17.5             | 9.00         | 3550/3250        | 152/149    | L          | 930                |
| 11.00R20    | 18PR       | 16.5             | 8.00         | 3550/3250        | 152/149    | K          | 930                |
| 12.00R20    | 20PR       | 16.5             | 8.5          | 4000/3650        | 156/153    | K          | 900                |
| 12.00R20    | 22PR       | 16.5             | 8.5          | 4000/3650        | 158/155    | K          | 900                |
| 11R24.5     | 16PR       | 16.0             | 8.25         | 3250/3000        | 149/146    | L          | 830                |
| 295/80R22.5 | 18PR       | 16.0             | 9.00         | 3550/3250        | 152/149    | L          | 900                |
| 315/80R22.5 | 20PR       | 16.0             | 9.00         | 4125/3750        | 157/154    | L          | 900                |
| 10.00R20    | 18PR       | 17.5             | 7.5          | 3250/3000        | 149/146    | K          | 930                |
| 12.00R24    | 20PR       | 17.5             | 8.50         | 4500/4125        | 160/157    | K          | 900                |
| 12.00R24    | 22PR       | 17.5             | 8.50         | 5000/4750        | 164/162    | K          | 900                |
| 13R22.5     | 20PR       | 18.0             | 9.75         | 4000/3650        | 156/153    | K          | 930                |
| 325/95R24   | 20PR       | 17.5             | 9.00         | 5000/4750        | 164/162    | K          | 900                |

*\*This product cannot be used for lorries truck and buses.*



## ST903

SUITABLE FOR ONLY TRAILER OR SEMI-TRAILER  
ON MID-LONG DISTANCE NATIONAL HIGHWAY TRANSPORTATION



High mileage



Reinforced skeleton material design



Optimized tire grounding marks design prevents irregular wear

| SIZE        | PLY RATING | TREAD DEPTH (MM) | STANDARD RIM | LOAD SINGLE / DUAL | LOAD INDEX | SPEED RATE | AIR PRESSURE (KPA) |
|-------------|------------|------------------|--------------|--------------------|------------|------------|--------------------|
| 245/70R17.5 | 16PR       | 14.0             | 7.50         | 2000/1900          | 132/130    | L          | 830                |
| 245/70R17.5 | 18PR       | 14.0             | 7.50         | 2120/2000          | 134/132    | L          | 900                |
| 245/70R19.5 | 16PR       | 14.0             | 7.50         | 2180/2060          | 135/133    | L          | 830                |

*\*This product cannot be used for lorries truck and buses.*



## SA813

SUITABLE FOR ONLY TRAILER OR SEMI-TRAILER  
ON MID-LONG DISTANCE NATIONAL HIGHWAY TRANSPORTATION



Excellent stone discharge performance



Good heat dissipation performance

| SIZE        | PLY RATING | TREAD DEPTH (MM) | STANDARD RIM | LOAD SINGLE / DUAL | LOAD INDEX | SPEED RATE | AIR PRESSURE (KPA) |
|-------------|------------|------------------|--------------|--------------------|------------|------------|--------------------|
| 385/65R22.5 | 20PR       | 15.5             | 11.75        | 4500               | 160        | L          | 900                |
| 385/65R22.5 | 24PR       | 15.5             | 11.75        | 5000               | 164        | K          | 900                |

*\*This product cannot be used for lorries truck and buses.*





# SD829



SUITABLE FOR ONLY TRAILER OR SEMI-TRAILER  
ON MID-SHORT DISTANCE NATIONAL HIGHWAY TRANSPORTATION



Good durability



Good heat dissipation performance

| SIZE    | PLY RATING | TREAD DEPTH (MM) | STANDARD RIM | LOAD SINGLE / DUAL | LOAD INDEX | SPEED RATE | AIR PRESSURE (kpa) |
|---------|------------|------------------|--------------|--------------------|------------|------------|--------------------|
| 12R22.5 | 18PR       | 25.0             | 9.00         | 3550/3250          | 152/149    | L          | 930                |

*\*This product cannot be used for lorries truck and buses.*



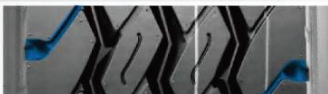
# SA802



SUITABLE FOR ONLY TRAILER OR SEMI-TRAILER  
ON MID-SHORT DISTANCE TRANSPORTATION OF PAVED ROAD AND MIXED ROAD



Excellent durability



Strengthen the design of tire body and bead

| SIZE     | PLY RATING | TREAD DEPTH (MM) | STANDARD RIM | LOAD SINGLE/DUAL | LOAD INDEX | SPEED RATE | AIR PRESSURE (KPA) |
|----------|------------|------------------|--------------|------------------|------------|------------|--------------------|
| 10.00R20 | 18PR       | 16.0             | 7.50         | 3250/3000        | 149/146    | K          | 930                |

*\*This product cannot be used for lorries truck and buses.*



# SA812/SA812A / SA812+



SUITABLE FOR ONLY TRAILER OR SEMI-TRAILER  
ON MID-LONG DISTANCE NATIONAL HIGHWAY TRANSPORTATION



Good tread heat dissipation



Wide adaptability road surface



Strengthened body and bead design

| SIZE        | PLY RATING | TREAD DEPTH (MM) | STANDARD RIM | LOAD SINGLE/DUAL | LOAD INDEX | SPEED RATE | AIR PRESSURE (KPA) |
|-------------|------------|------------------|--------------|------------------|------------|------------|--------------------|
| 10.00R20    | 18PR       | 16.0             | 7.50         | 3250/3000        | 149/146    | K          | 930                |
| 11.00R20    | 18PR       | 17.0             | 8.00         | 3550/3250        | 152/149    | K          | 930                |
| 12.00R20    | 20PR       | 17.5             | 8.50         | 4000/3650        | 156/153    | K          | 900                |
| 12.00R20    | 22PR       | 17.5             | 8.50         | 4000/3650        | 156/153    | K          | 900                |
| 12.00R24    | 20PR       | 17.5             | 8.50         | 4500/4125        | 160/157    | K          | 900                |
| 11R22.5     | 16PR       | 15.0             | 8.25         | 3000/2725        | 146/143    | K          | 830                |
| 11R22.5     | 18PR       | 15.0             | 8.25         | 3250/3000        | 149/146    | M          | 930                |
| 12R22.5     | 18PR       | 15.0             | 9.00         | 3550/3250        | 152/149    | K          | 930                |
| 13R22.5     | 20PR       | 17.5             | 9.75         | 4000/3650        | 156/153    | K          | 930                |
| 315/80R22.5 | 20PR       | 15.0             | 9.00         | 4125/3750        | 157/154    | K          | 900                |
| 315/80R22.5 | 22PR       | 16.0             | 9.00         | 4500/4125        | 160/157    | K          | 930                |

*\*This product cannot be used for lorries truck and buses.*



# SA816



SUITABLE FOR ONLY TRAILER OR SEMI-TRAILER  
ON MID-LONG DISTANCE NATIONAL HIGHWAY TRANSPORTATION



Good durability



Good tear resistance of pattern groove

| SIZE    | PLY RATING | TREAD DEPTH (MM) | STANDARD RIM | LOAD SINGLE / DUAL | LOAD INDEX | SPEED RATE | AIR PRESSURE (kpa) |
|---------|------------|------------------|--------------|--------------------|------------|------------|--------------------|
| 12R22.5 | 18PR       | 16.5             | 9.00         | 3550/3250          | 152/149    | L          | 930                |

*\*This product cannot be used for lorries truck and buses.*

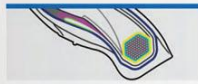




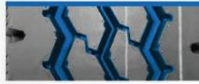
# SA801/SA801+



SUITABLE FOR ONLY TRAILER OR SEMI-TRAILER  
ON MID-SHORT DISTANCE TRANSPORTATION OF PAVED ROAD  
AND MIXED ROAD



Excellent durability



Wide adaptability of  
road surface



Anti-skid performance

| SIZE     | PLY RATING | TREAD DEPTH (MM) | STANDARD RIM | LOAD SINGLE/DUAL | LOAD INDEX | SPEED RATE | AIR PRESSURE (KPA) |
|----------|------------|------------------|--------------|------------------|------------|------------|--------------------|
| 10.00R20 | 18PR       | 16.0             | 7.50         | 3250/3000        | 149/146    | K          | 930                |

*\*This product cannot be used for lorries truck and buses.*



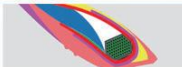
# SD838



SUITABLE FOR ONLY TRAILER OR SEMI-TRAILER  
ON MID-LONG DISTANCE NATIONAL HIGHWAY TRANSPORTATION



Good chunking resistance



Good loading performance

| SIZE    | PLY RATING | TREAD DEPTH (MM) | STANDARD RIM | LOAD SINGLE / DUAL | LOAD INDEX | SPEED RATE | AIR PRESSURE (kpa) |
|---------|------------|------------------|--------------|--------------------|------------|------------|--------------------|
| 12R22.5 | 18PR       | 18.5             | 9.00         | 3550/3250          | 152/149    | K          | 930                |

*\*This product cannot be used for lorries truck and buses.*



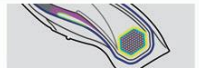
# SD327



SUITABLE FOR ONLY TRAILER OR SEMI-TRAILER  
ON MID-SHORT DISTANCE TRANSPORTATION OF PAVED ROAD  
AND MIXED ROAD



Good heat dissipation  
performance



Good durability

| SIZE     | PLY RATING | TREAD DEPTH (MM) | STANDARD RIM | LOAD SINGLE / DUAL | LOAD INDEX | SPEED RATE | AIR PRESSURE (kpa) |
|----------|------------|------------------|--------------|--------------------|------------|------------|--------------------|
| 10.00R20 | 18PR       | 19.0             | 7.50         | 3250/3000          | 149/146    | K          | 930                |

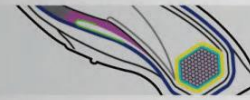
*\*This product cannot be used for lorries truck and buses.*



# SA898



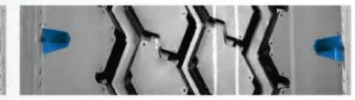
SUITABLE FOR ONLY TRAILER OR SEMI-TRAILER  
ON MID-SHORT DISTANCE TRANSPORTATION OF PAVED ROAD  
AND MIXED ROAD



Excellent grip



Excellent durability and loading performance



Good heat dissipation on shoulder

| SIZE     | PLY RATING | TREAD DEPTH (MM) | STANDARD RIM | LOAD SINGLE / DUAL | LOAD INDEX | SPEED RATE | AIR PRESSURE (KPA) |
|----------|------------|------------------|--------------|--------------------|------------|------------|--------------------|
| 12.00R20 | 20PR       | 16.5             | 8.50         | 4000/3650          | 156/153    | K          | 900                |
| 12.00R20 | 22PR       | 16.5             | 8.50         | 4000/3650          | 156/153    | K          | 900                |

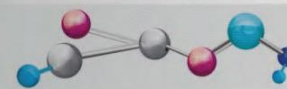
*\*This product cannot be used for lorries truck and buses.*



# SA823



SUITABLE FOR ONLY TRAILER OR SEMI-TRAILER  
ON MID-SHORT DISTANCE NATIONAL HIGHWAY TRANSPORTATION



Ultra-long mileage



Anti-clamping stone design



Excellent durability and loading performance

| SIZE     | PLY RATING | TREAD DEPTH (MM) | STANDARD RIM | LOAD SINGLE / DUAL | LOAD INDEX | SPEED RATE | AIR PRESSURE (KPA) |
|----------|------------|------------------|--------------|--------------------|------------|------------|--------------------|
| 12.00R24 | 20PR       | 17.5             | 8.50         | 4500/4125          | 160/157    | K          | 900                |

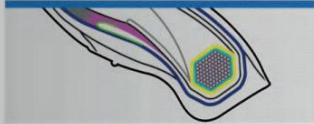
*\*This product cannot be used for lorries truck and buses.*



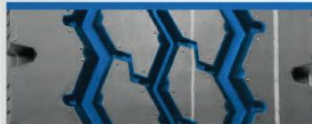


## SA868/SA868+

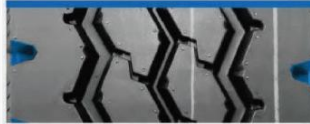
SUITABLE FOR ONLY TRAILER OR SEMI-TRAILER  
ON MID-SHORT DISTANCE TRANSPORTATION OF PAVED ROAD  
AND MIXED ROAD



Excellent durability and loading performance



Anti-skid performance



Wide adaptability of road surface

| SIZE     | PLY RATING | TREAD DEPTH (MM) | STANDARD RIM | LOAD SINGLE / DUAL | LOAD INDEX | SPEED RATE | AIR PRESSURE (KPA) |
|----------|------------|------------------|--------------|--------------------|------------|------------|--------------------|
| 11.00R20 | 18PR       | 16.5             | 8.00         | 3550/3250          | 152/149    | K          | 930                |
| 12.00R20 | 20PR       | 17.0             | 8.50         | 4000/3650          | 156/153    | K          | 900                |
| 12.00R20 | 22PR       | 17.0             | 8.50         | 4000/3650          | 156/153    | K          | 900                |

*\*This product cannot be used for lorries truck and buses.*



## ST970

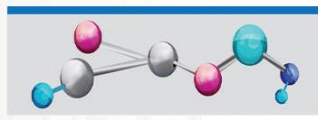
SUITABLE FOR ONLY TRAILER OR SEMI-TRAILER  
ON MID-LONG DISTANCE NATIONAL HIGHWAY TRANSPORTATION



Excellent wear resistance



Low fuel consumption



Low heat of tread formula

| SIZE        | PLY RATING | TREAD DEPTH (MM) | STANDARD RIM | LOAD SINGLE / DUAL | LOAD INDEX | SPEED RATE | AIR PRESSURE (kpa) |
|-------------|------------|------------------|--------------|--------------------|------------|------------|--------------------|
| 385/65R22.5 | 20PR       | 16.7             | 11.75        | 4500               | 160        | K          | 900                |
| 385/65R22.5 | 24PR       | 16.7             | 11.75        | 5000               | 164        | K          | 900                |
| 385/55R22.5 | 20PR       | 16.5             | 12.25        | 4500               | 160        | K          | 900                |

*\*This product cannot be used for lorries truck and buses.*



## SD309

SUITABLE FOR ONLY TRAILER OR SEMI-TRAILER  
ON MID-LONG DISTANCE NATIONAL HIGHWAY TRANSPORTATION



Good puncture resistance



Good heat dissipation performance

| SIZE    | PLY RATING | TREAD DEPTH (MM) | STANDARD RIM | LOAD SINGLE / DUAL | LOAD INDEX | SPEED RATE | AIR PRESSURE (KPA) |
|---------|------------|------------------|--------------|--------------------|------------|------------|--------------------|
| 11R22.5 | 16PR       | 23.0             | 8.25         | 3250/3000          | 146/143    | L          | 930                |
| 11R22.5 | 18PR       | 23.0             | 8.25         | 3250/3000          | 149/146    | K          | 930                |
| 11R24.5 | 16PR       | 23.0             | 8.25         | 3250/3000          | 149/146    | K          | 830                |

*\*This product cannot be used for lorries truck and buses.*



## SD368

SUITABLE FOR ONLY TRAILER OR SEMI-TRAILER  
ON MID-LONG DISTANCE NATIONAL HIGHWAY TRANSPORTATION



Excellent self-cleaning performance



Groove bottom crack resistance

| SIZE    | PLY RATING | TREAD DEPTH (MM) | STANDARD RIM | LOAD SINGLE / DUAL | LOAD INDEX | SPEED RATE | AIR PRESSURE (KPA) |
|---------|------------|------------------|--------------|--------------------|------------|------------|--------------------|
| 11R22.5 | 16PR       | 22.0             | 8.25         | 3000/2725          | 146/143    | L          | 830                |
| 11R22.5 | 18PR       | 22.0             | 8.25         | 3250/3000          | 149/146    | L          | 930                |

*\*This product cannot be used for lorries truck and buses.*

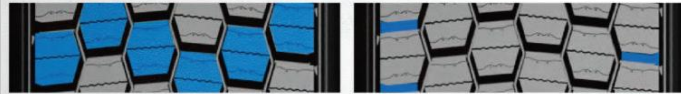




# SD939



SUITABLE FOR ONLY TRAILER OR SEMI-TRAILER  
ON MID-LONG DISTANCE NATIONAL HIGHWAY TRANSPORTATION



Good heat dissipation performance on shoulder

Excellent grip

| SIZE        | PLY RATING | TREAD DEPTH (MM) | STANDARD RIM | LOAD SINGLE / DUAL | LOAD INDEX | SPEED RATE | AIR PRESSURE (KPA) |
|-------------|------------|------------------|--------------|--------------------|------------|------------|--------------------|
| 295/80R22.5 | 18PR       | 18.0             | 9.00         | 3550/3250          | 152/149    | L          | 900                |

*\*This product cannot be used for lorries truck and buses.*



# SD959



SUITABLE FOR ONLY TRAILER OR SEMI-TRAILER  
ON MID-LONG DISTANCE NATIONAL HIGHWAY TRANSPORTATION

| SIZE        | PLY RATING | TREAD DEPTH (MM) | STANDARD RIM | LOAD SINGLE / DUAL | LOAD INDEX | SPEED RATE | AIR PRESSURE (KPA) |
|-------------|------------|------------------|--------------|--------------------|------------|------------|--------------------|
| 315/80R22.5 | 22PR       | 21.0             | 9.00         | 4500/4125          | 160/157    | K          | 930                |
| 315/70R22.5 | 20PR       | 21.0             | 9.00         | 3750/3450          | 154/151    | L          | 930                |

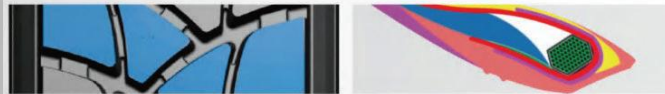
*\*This product cannot be used for lorries truck and buses.*



# SD308



SUITABLE FOR ONLY TRAILER OR SEMI-TRAILER  
ON MID-SHORT DISTANCE TRANSPORTATION OF ROUGH ROADS



Excellent durability

Low heat formula

| SIZE        | PLY RATING | TREAD DEPTH (MM) | STANDARD RIM | LOAD SINGLE / DUAL | LOAD INDEX | SPEED RATE | AIR PRESSURE (KPA) |
|-------------|------------|------------------|--------------|--------------------|------------|------------|--------------------|
| 315/80R22.5 | 20PR       | 20.5             | 9.00         | 4125/3750          | 157/154    | K          | 900                |

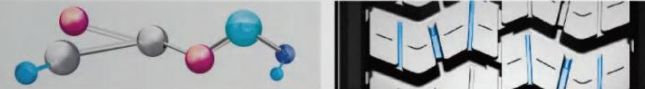
*\*This product cannot be used for lorries truck and buses.*



# SD338



SUITABLE FOR ONLY TRAILER OR SEMI-TRAILER  
ON MID-LONG DISTANCE NATIONAL HIGHWAY TRANSPORTATION



Tread puncture resistance

Tear resistance of pattern groove

| SIZE        | PLY RATING | TREAD DEPTH (MM) | STANDARD RIM | LOAD SINGLE / DUAL | LOAD INDEX | SPEED RATE | AIR PRESSURE (KPA) |
|-------------|------------|------------------|--------------|--------------------|------------|------------|--------------------|
| 315/80R22.5 | 20PR       | 18.5             | 9.00         | 4125/3750          | 157/154    | K          | 900                |

*\*This product cannot be used for lorries truck and buses.*





# SD929



SUITABLE FOR ONLY TRAILER OR SEMI-TRAILER  
ON MID-LONG DISTANCE NATIONAL HIGHWAY TRANSPORTATION



Widened tread design

Good heat dissipation performance

| SIZE        | PLY RATING | TREAD DEPTH (MM) | STANDARD RIM | LOAD SINGLE / DUAL | LOAD INDEX | SPEED RATE | AIR PRESSURE (KPA) |
|-------------|------------|------------------|--------------|--------------------|------------|------------|--------------------|
| 315/80R22.5 | 20PR       | 22.0             | 9.00         | 4125/3750          | 157/154    | K          | 900                |
| 295/80R22.5 | 18PR       | 22.0             | 9.00         | 3550/3250          | 152/149    | K          | 900                |

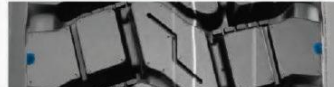
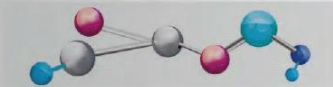
*\*This product cannot be used for lorries truck and buses.*



# SD376



SUITABLE FOR ONLY TRAILER OR SEMI-TRAILER  
ON MID-SHORT DISTANCE TRANSPORTATION OF PAVED ROAD AND MIXED ROAD



Excellent durability and loading performance

Anti-skid performance

Good heat dissipation on shoulder

| SIZE     | PLY RATING | TREAD DEPTH (MM) | STANDARD RIM | LOAD SINGLE / DUAL | LOAD INDEX | SPEED RATE | AIR PRESSURE (KPA) |
|----------|------------|------------------|--------------|--------------------|------------|------------|--------------------|
| 11.00R20 | 18PR       | 20.0             | 8.00         | 3550/3250          | 152/149    | K          | 930                |

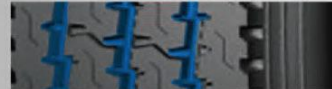
*\*This product cannot be used for lorries truck and buses.*



# SD806



SUITABLE FOR ONLY TRAILER OR SEMI-TRAILER  
ON MID-SHORT DISTANCE TRANSPORTATION OF PAVED ROAD AND MIXED ROAD



Small stone retention amount

Ground stress evenly distributed

High strength framework material

| SIZE        | PLY RATING | TREAD DEPTH (MM) | STANDARD RIM | LOAD SINGLE / DUAL | LOAD INDEX | SPEED RATE | AIR PRESSURE (KPA) |
|-------------|------------|------------------|--------------|--------------------|------------|------------|--------------------|
| 11R24.5     | 16PR       | 19.5             | 8.25         | 3250/3000          | 149/146    | L          | 830                |
| 285/75R24.5 | 16PR       | 19.5             | 8.25         | 3075/2800          | 147/144    | L          | 830                |
| 295/75R22.5 | 16PR       | 19.5             | 9.00         | 3000/2725          | 146/143    | L          | 830                |

*\*This product cannot be used for lorries truck and buses.*



# SD316



SUITABLE FOR ONLY TRAILER OR SEMI-TRAILER  
ON MID-SHORT DISTANCE TRANSPORTATION OF PAVED ROAD AND MIXED ROAD



Tear resistance performance

Good heat dissipation performance on shoulder

| SIZE     | PLY RATING | TREAD DEPTH (MM) | STANDARD RIM | LOAD SINGLE / DUAL | LOAD INDEX | SPEED RATE | AIR PRESSURE (KPA) |
|----------|------------|------------------|--------------|--------------------|------------|------------|--------------------|
| 12.00R24 | 20PR       | 20.0             | 8.50         | 4500/4125          | 160/157    | J          | 900                |

*\*This product cannot be used for lorries truck and buses.*

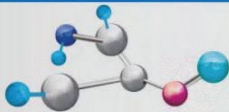




# SD306



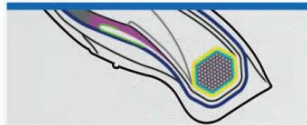
SUITABLE FOR ONLY TRAILER OR SEMI-TRAILER  
ON MID-SHORT DISTANCE TRANSPORTATION OF PAVED ROAD  
AND MIXED ROAD



Low heat rubber formula design



Excellent grip, anti-skid performance



Good loading performance

| SIZE     | PLY RATING | TREAD DEPTH (MM) | STANDARD RIM | LOAD SINGLE/DUAL | LOAD INDEX | SPEED RATE | AIR PRESSURE (KPA) |
|----------|------------|------------------|--------------|------------------|------------|------------|--------------------|
| 10.00R20 | 18PR       | 19.5             | 7.50         | 3250/3000        | 149/146    | K          | 930                |

*\*This product cannot be used for lorries truck and buses.*



# SA315



SUITABLE FOR ONLY TRAILER OR SEMI-TRAILER  
ON MID-SHORT DISTANCE TRANSPORTATION OF PAVED ROAD  
AND MIXED ROAD



Good tread heat dissipation



Good adaptability of road conditions



Zigzag pattern design, provides good water evacuation performance

| SIZE    | PLY RATING | TREAD DEPTH (MM) | STANDARD RIM | LOAD SINGLE / DUAL | LOAD INDEX | SPEED RATE | AIR PRESSURE (kpa) |
|---------|------------|------------------|--------------|--------------------|------------|------------|--------------------|
| 13R22.5 | 20PR       | 16.5             | 9.75         | 4000/3650          | 156/153    | K          | 930                |

*\*This product cannot be used for lorries truck and buses.*



# SD307



SUITABLE FOR ONLY TRAILER OR SEMI-TRAILER  
ON MID-SHORT DISTANCE TRANSPORTATION OF PAVED ROAD  
AND MIXED ROAD



Excellent durability and loading performance



Anti-clamping stone performance

| SIZE     | PLY RATING | TREAD DEPTH (MM) | STANDARD RIM | LOAD SINGLE/DUAL | LOAD INDEX | SPEED RATE | AIR PRESSURE (KPA) |
|----------|------------|------------------|--------------|------------------|------------|------------|--------------------|
| 10.00R20 | 18PR       | 19.0             | 7.50         | 3250/3000        | 149/146    | K          | 930                |

*\*This product cannot be used for lorries truck and buses.*



# SD312



SUITABLE FOR ONLY TRAILER OR SEMI-TRAILER  
ON MID-SHORT DISTANCE TRANSPORTATION OF PAVED ROAD  
AND MIXED ROAD



Good heat dissipation on shoulder



Strengthen the design of tire body and bead

| SIZE     | PLY RATING | TREAD DEPTH (MM) | STANDARD RIM | LOAD SINGLE / DUAL | LOAD INDEX | SPEED RATE | AIR PRESSURE (KPA) |
|----------|------------|------------------|--------------|--------------------|------------|------------|--------------------|
| 11.00R20 | 18PR       | 20.0             | 8.00         | 3550/3250          | 152/149    | K          | 930                |

*\*This product cannot be used for lorries truck and buses.*



# SD305



SUITABLE FOR ONLY TRAILER OR SEMI-TRAILER  
ON MID-SHORT DISTANCE TRANSPORTATION OF PAVED ROAD  
AND MIXED ROAD

| SIZE        | PLY RATING | TREAD DEPTH (MM) | STANDARD RIM | LOAD SINGLE / DUAL | LOAD INDEX | SPEED RATE | AIR PRESSURE (KPA) |
|-------------|------------|------------------|--------------|--------------------|------------|------------|--------------------|
| 425/65R22.5 | 22PR       | 18.0             | 12.25        | 5300               | 166        | K          | 900                |

*\*This product cannot be used for lorries truck and buses.*





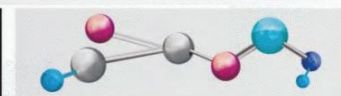
# SD318



SUITABLE FOR ONLY TRAILER OR SEMI-TRAILER  
ON MID-SHORT DISTANCE TRANSPORTATION OF ROUGH ROADS



Puncture resistance performance



Deepened pattern groove design

| SIZE        | PLY RATING | TREAD DEPTH (MM) | STANDARD RIM | LOAD SINGLE / DUAL | LOAD INDEX | SPEED RATE | AIR PRESSURE (KPA) |
|-------------|------------|------------------|--------------|--------------------|------------|------------|--------------------|
| 295/80R22.5 | 18PR       | 24.0             | 9.00         | 3550/3250          | 152/149    | K          | 900                |

*\*This product cannot be used for lorries truck and buses.*



# SD357



SUITABLE FOR ONLY TRAILER OR SEMI-TRAILER  
ON MID-SHORT DISTANCE TRANSPORTATION OF PAVED ROAD AND MIXED ROAD



Puncture resistance performance

| SIZE    | PLY RATING | TREAD DEPTH (MM) | STANDARD RIM | LOAD SINGLE / DUAL | LOAD INDEX | SPEED RATE | AIR PRESSURE (kpa) |
|---------|------------|------------------|--------------|--------------------|------------|------------|--------------------|
| 11R22.5 | 16PR       | 23.0             | 8.25         | 3000/2725          | 146/143    | G          | 830                |
| 11R22.5 | 18PR       | 23.0             | 8.25         | 3250/3000          | 149/146    | G          | 930                |
| 11R24.5 | 16PR       | 21.0             | 8.25         | 3250/3000          | 149/146    | G          | 830                |

*\*This product cannot be used for lorries truck and buses.*



# SD358



SUITABLE FOR ONLY TRAILER OR SEMI-TRAILER  
ON MID-SHORT DISTANCE TRANSPORTATION OF ROUGH ROADS



Low heat and anti-wear formula



Excellent durability, loading performance

| SIZE    | PLY RATING | TREAD DEPTH (MM) | STANDARD RIM | LOAD SINGLE / DUAL | LOAD INDEX | SPEED RATE | AIR PRESSURE (KPA) |
|---------|------------|------------------|--------------|--------------------|------------|------------|--------------------|
| 11R22.5 | 16PR       | 22.0             | 8.25         | 3000/2725          | 146/143    | L          | 830                |
| 11R22.5 | 18PR       | 22.0             | 8.25         | 3250/3000          | 149/146    | L          | 930                |

*\*This product cannot be used for lorries truck and buses.*



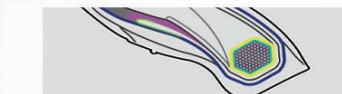
# SD317



SUITABLE FOR ONLY TRAILER OR SEMI-TRAILER  
ON MID-SHORT DISTANCE TRANSPORTATION OF PAVED ROAD AND MIXED ROAD



Good heat dissipation performance



Good durability

| SIZE     | PLY RATING | TREAD DEPTH (MM) | STANDARD RIM | LOAD SINGLE / DUAL | LOAD INDEX | SPEED RATE | AIR PRESSURE (kpa) |
|----------|------------|------------------|--------------|--------------------|------------|------------|--------------------|
| 10.00R20 | 18PR       | 19.0             | 7.50         | 3250/3000          | 149/146    | K          | 930                |

*\*This product cannot be used for lorries truck and buses.*





# SD767/SD767+

SUITABLE FOR ONLY TRAILER OR SEMI-TRAILER  
ON MID-SHORT DISTANCE TRANSPORTATION OF MIXED ROADS



Excellent durability, loading performance



Tear resistance pattern groove

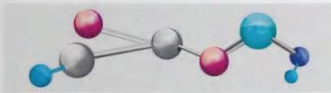
| SIZE    | PLY RATING | TREAD DEPTH (MM) | STANDARD RIM | LOAD SINGLE / DUAL | LOAD INDEX | SPEED RATE | AIR PRESSURE (KPA) |
|---------|------------|------------------|--------------|--------------------|------------|------------|--------------------|
| 12R22.5 | 18PR       | 20.5             | 9.00         | 3550/3250          | 152/149    | D          | 930                |

*\*This product cannot be used for lorries truck and buses.*



# SD359

SUITABLE FOR ONLY TRAILER OR SEMI-TRAILER  
ON MID-SHORT DISTANCE TRANSPORTATION OF PAVED ROAD AND MIXED ROAD



Excellent tear resistance performance



Excellent loading performance

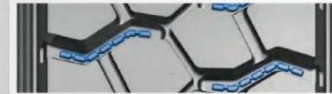
| SIZE     | PLY RATING | TREAD DEPTH (MM) | STANDARD RIM | LOAD SINGLE / DUAL | LOAD INDEX | SPEED RATE | AIR PRESSURE (KPA) |
|----------|------------|------------------|--------------|--------------------|------------|------------|--------------------|
| 12.00R20 | 20PR       | 18.5             | 8.50         | 4000/3650          | 156/153    | K          | 900                |
| 12.00R20 | 22PR       | 18.5             | 8.50         | 4000/3650          | 156/153    | K          | 900                |

*\*This product cannot be used for lorries truck and buses.*

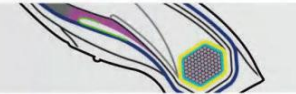


# SD369/SD369+

SUITABLE FOR ONLY TRAILER OR SEMI-TRAILER  
ON MID-SHORT DISTANCE TRANSPORTATION OF PAVED ROAD AND MIXED ROAD



Anti-clamping stone design



Excellent durability and loading performance

| SIZE     | PLY RATING | TREAD DEPTH (MM) | STANDARD RIM | LOAD SINGLE / DUAL | LOAD INDEX | SPEED RATE | AIR PRESSURE (KPA) |
|----------|------------|------------------|--------------|--------------------|------------|------------|--------------------|
| 12.00R20 | 20PR       | 19.0             | 8.50         | 4000/3650          | 156/153    | K          | 900                |
| 12.00R20 | 22PR       | 19.0             | 8.50         | 4000/3650          | 156/153    | K          | 900                |

*\*This product cannot be used for lorries truck and buses.*



# SD319/SD319+

SUITABLE FOR ONLY TRAILER OR SEMI-TRAILER  
ON MID-SHORT DISTANCE TRANSPORTATION OF PAVED ROAD AND MIXED ROAD



Excellent loading performance



Anti-clamping stone performance

| SIZE     | PLY RATING | TREAD DEPTH (MM) | STANDARD RIM | LOAD SINGLE / DUAL | LOAD INDEX | SPEED RATE | AIR PRESSURE (KPA) |
|----------|------------|------------------|--------------|--------------------|------------|------------|--------------------|
| 13R22.5  | 20PR       | 21.0             | 9.75         | 4000/3650          | 156/153    | K          | 930                |
| 11.00R20 | 18PR       | 20.0             | 8.00         | 3550/3250          | 152/149    | K          | 930                |
| 12.00R20 | 20PR       | 21.0             | 8.50         | 4000/3650          | 156/153    | K          | 900                |
| 12.00R20 | 22PR       | 21.0             | 8.50         | 4000/3650          | 158/155    | K          | 900                |

*\*This product cannot be used for lorries truck and buses.*

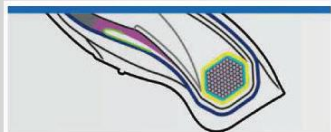




# SD329+



SUITABLE FOR ONLY TRAILER OR SEMI-TRAILER  
ON MID-SHORT DISTANCE TRANSPORTATION OF PAVED ROAD  
AND MIXED ROAD



Excellent durability and loading performance

| SIZE     | PLY RATING | TREAD DEPTH (MM) | STANDARD RIM | LOAD SINGLE / DUAL | LOAD INDEX | SPEED RATE | AIR PRESSURE (KPA) |
|----------|------------|------------------|--------------|--------------------|------------|------------|--------------------|
| 12.00R20 | 20PR       | 19.5             | 8.50         | 4000/3650          | 156/153    | K          | 900                |
| 12.00R20 | 22PR       | 19.5             | 8.50         | 4000/3650          | 156/153    | K          | 900                |

*\*This product cannot be used for lorries truck and buses.*



# SD837



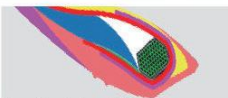
SUITABLE FOR ONLY TRAILER OR SEMI-TRAILER  
ON MID-SHORT DISTANCE TRANSPORTATION OF MIXED ROADS



Tear resistance pattern groove



Crown explosion-proof performance



Excellent durability

| SIZE    | PLY RATING | TREAD DEPTH (MM) | STANDARD RIM | LOAD SINGLE / DUAL | LOAD INDEX | SPEED RATE | AIR PRESSURE (kpa) |
|---------|------------|------------------|--------------|--------------------|------------|------------|--------------------|
| 12R22.5 | 18PR       | 20.5             | 9.00         | 3550/3250          | 152/149    | K          | 930                |

*\*This product cannot be used for lorries truck and buses.*

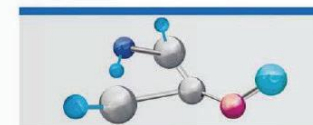
# SD339+



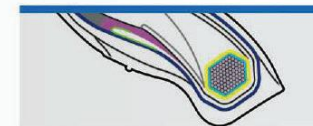
SUITABLE FOR ONLY TRAILER OR SEMI-TRAILER  
ON MID-SHORT DISTANCE TRANSPORTATION OF PAVED ROAD  
AND MIXED ROAD



Excellent durability of crown



Excellent tear resistance



Good loading performance



| SIZE     | PLY RATING | TREAD DEPTH (MM) | STANDARD RIM | LOAD SINGLE / DUAL | LOAD INDEX | SPEED RATE | AIR PRESSURE (KPA) |
|----------|------------|------------------|--------------|--------------------|------------|------------|--------------------|
| 12.00R20 | 20PR       | 18.5             | 8.50         | 4000/3650          | 156/153    | K          | 900                |
| 12.00R20 | 22PR       | 18.5             | 8.50         | 4000/3650          | 156/153    | K          | 900                |

*\*This product cannot be used for lorries truck and buses.*

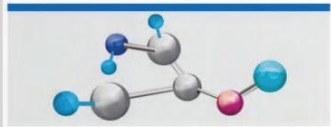




# SD737



SUITABLE FOR ONLY TRAILER OR SEMI-TRAILER  
ON ROUGH ROADS TRANSPORTATION



Excellent puncture resistance



Excellent loading performance

| SIZE     | PLY RATING | TREAD DEPTH (MM) | STANDARD RIM | LOAD SINGLE/DUAL | LOAD INDEX | SPEED RATE | AIR PRESSURE (KPA) |
|----------|------------|------------------|--------------|------------------|------------|------------|--------------------|
| 10.00R20 | 18PR       | 23.0             | 7.50         | 3250/3000        | 149/146    | D          | 930                |
| 12.00R20 | 20PR       | 24.0             | 8.50         | 4000/3650        | 156/153    | G          | 900                |
| 12.00R20 | 22PR       | 24.0             | 8.50         | 4250/3875        | 158/155    | G          | 900                |

*\*This product cannot be used for lorries truck and buses.*



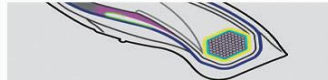
# SD717



SUITABLE FOR ONLY TRAILER OR SEMI-TRAILER  
ON ROUGH ROADS TRANSPORTATION



Excellent puncture resistance, cut and chip resistance



Excellent loading performance

| SIZE     | PLY RATING | TREAD DEPTH (MM) | STANDARD RIM | LOAD SINGLE / DUAL | LOAD INDEX | SPEED RATE | AIR PRESSURE (kpa) |
|----------|------------|------------------|--------------|--------------------|------------|------------|--------------------|
| 11.00R20 | 18PR       | 24.0             | 8.00         | 3550/3250          | 152/149    | D          | 930                |
| 12.00R20 | 20PR       | 25.0             | 8.50         | 4000/3650          | 156/153    | D          | 900                |
| 12.00R20 | 22PR       | 25.0             | 8.50         | 4000/3650          | 156/153    | D          | 900                |

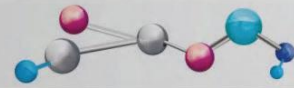
*\*This product cannot be used for lorries truck and buses.*



# SD757



SUITABLE FOR ONLY TRAILER OR SEMI-TRAILER  
ON ROUGH ROADS TRANSPORTATION



Excellent puncture resistance



Excellent loading performance

| SIZE     | PLY RATING | TREAD DEPTH (MM) | STANDARD RIM | LOAD SINGLE / DUAL | LOAD INDEX | SPEED RATE | AIR PRESSURE (KPA) |
|----------|------------|------------------|--------------|--------------------|------------|------------|--------------------|
| 12.00R20 | 20PR       | 23.0             | 8.50         | 4000/3650          | 156/153    | G          | 900                |
| 12.00R20 | 22PR       | 23.0             | 8.50         | 4000/3650          | 156/153    | G          | 900                |
| 13R225   | 20PR       | 23.0             | 9.75         | 4000/3650          | 156/153    | G          | 930                |

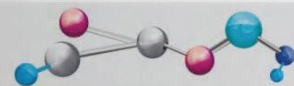
*\*This product cannot be used for lorries truck and buses.*



# SD707



SUITABLE FOR ONLY TRAILER OR SEMI-TRAILER  
ON ROUGH ROADS TRANSPORTATION



Excellent puncture resistance, cutting resistance



Excellent loading performance

| SIZE     | PLY RATING | TREAD DEPTH (MM) | STANDARD RIM | LOAD SINGLE / DUAL | LOAD INDEX | SPEED RATE | AIR PRESSURE (KPA) |
|----------|------------|------------------|--------------|--------------------|------------|------------|--------------------|
| 12.00R20 | 20PR       | 24.5             | 8.50         | 4000/3650          | 156/153    | D          | 900                |
| 12.00R20 | 22PR       | 24.5             | 8.50         | 4000/3650          | 156/153    | D          | 900                |

*\*This product cannot be used for lorries truck and buses.*

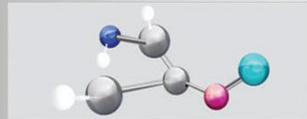




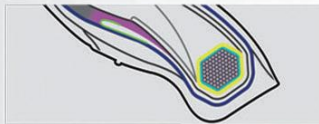
# SD727



SUITABLE FOR ONLY TRAILER OR SEMI-TRAILER  
ON ROUGH ROADS TRANSPORTATION



Excellent cutting resistance, explosion-proof performance



Excellent loading performance

| SIZE     | PLY RATING | TREAD DEPTH (MM) | STANDARD RIM | LOAD SINGLE / DUAL | LOAD INDEX | SPEED RATE | AIR PRESSURE (KPA) |
|----------|------------|------------------|--------------|--------------------|------------|------------|--------------------|
| 11.00R20 | 18PR       | 24.0             | 8.00         | 3550/3250          | 152/149    | D          | 930                |
| 12.00R20 | 20PR       | 26.0             | 8.50         | 4000/3650          | 156/153    | D          | 900                |
| 12.00R20 | 22PR       | 26.0             | 8.50         | 4000/3650          | 158/155    | F          | 900                |

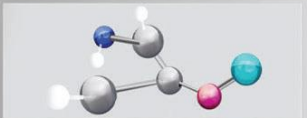
*\*This product cannot be used for lorries truck and buses.*



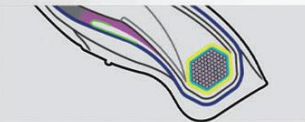
# SD777



SUITABLE FOR ONLY TRAILER OR SEMI-TRAILER  
ON ROUGH ROADS TRANSPORTATION



Excellent cutting resistance, explosion-proof performance



Excellent loading performance

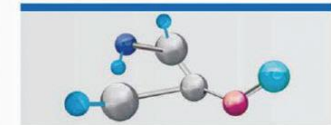
| SIZE     | PLY RATING | TREAD DEPTH (MM) | STANDARD RIM | LOAD SINGLE / DUAL | LOAD INDEX | SPEED RATE | AIR PRESSURE (KPA) |
|----------|------------|------------------|--------------|--------------------|------------|------------|--------------------|
| 11.00R20 | 18PR       | 24.0             | 8.00         | 3550/3250          | 152/149    | D          | 930                |
| 12.00R20 | 20PR       | 26.0             | 8.50         | 4000/3650          | 156/153    | D          | 900                |
| 12R22.5  | 18PR       | 23.5             | 9.00         | 3550/3250          | 152/149    | L          | 930                |

*\*This product cannot be used for lorries truck and buses.*

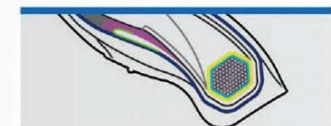
# SD787



SUITABLE FOR ONLY TRAILER OR SEMI-TRAILER  
ON ROUGH ROADS TRANSPORTATION



Excellent cutting resistance, explosion-proof performance



Excellent loading performance

| SIZE     | PLY RATING | TREAD DEPTH (MM) | STANDARD RIM | LOAD SINGLE / DUAL | LOAD INDEX | SPEED RATE | AIR PRESSURE (KPA) |
|----------|------------|------------------|--------------|--------------------|------------|------------|--------------------|
| 12.00R20 | 20PR       | 26.0             | 8.50         | 4000/3650          | 156/153    | D          | 900                |
| 12.00R20 | 22PR       | 26.0             | 8.50         | 4000/3650          | 158/155    | F          | 900                |

*\*This product cannot be used for lorries truck and buses.*

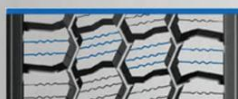




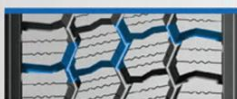
# SD377S



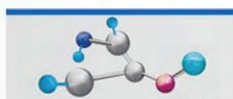
SUITABLE FOR ONLY TRAILER OR SEMI-TRAILER  
ON WET ROAD TRANSPORTATION



3D sipe design



Excellent skid resistance



Special snow tread fomula design

| SIZE        | PLY RATING | TREAD DEPTH (MM) | STANDARD RIM | LOAD SINGLE / DUAL | LOAD INDEX | SPEED RATE | AIR PRESSURE (KPA) |
|-------------|------------|------------------|--------------|--------------------|------------|------------|--------------------|
| 11R22.5     | 18PR       | 21.0             | 8.25         | 3250/3000          | 149/146    | K          | 930                |
| 11R24.5     | 16PR       | 21.0             | 8.25         | 3250/3000          | 149/146    | K          | 830                |
| 295/75R22.5 | 16PR       | 23.0             | 9.00         | 3000/2725          | 146/143    | K          | 830                |

*\*This product cannot be used for lorries truck and buses.*



# SD336



SUITABLE FOR ONLY TRAILER OR SEMI-TRAILER  
ON WET ROAD TRANSPORTATION

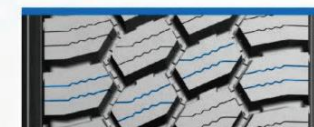
| SIZE    | PLY RATING | TREAD DEPTH (MM) | STANDARD RIM | LOAD SINGLE / DUAL | LOAD INDEX | SPEED RATE | AIR PRESSURE (KPA) |
|---------|------------|------------------|--------------|--------------------|------------|------------|--------------------|
| 11R22.5 | 16PR       | 25.0             | 8.25         | 3000/2725          | 146/143    | K          | 830                |
| 11R22.5 | 18PR       | 25.0             | 8.25         | 3250/3000          | 149/146    | K          | 930                |
| 11R24.5 | 16PR       | 25.0             | 8.25         | 3250/3000          | 149/146    | K          | 830                |

*\*This product cannot be used for lorries truck and buses.*

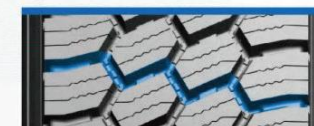
# SD378S



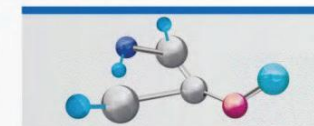
SUITABLE FOR ONLY TRAILER OR SEMI-TRAILER  
ON WET ROAD TRANSPORTATION



3D sipe design



Excellent skid resistance



Special snow tread fomula design



| SIZE        | PLY RATING | TREAD DEPTH (MM) | STANDARD RIM | LOAD SINGLE / DUAL | LOAD INDEX | SPEED RATE | AIR PRESSURE (KPA) |
|-------------|------------|------------------|--------------|--------------------|------------|------------|--------------------|
| 11R22.5     | 16PR       | 21.0             | 8.25         | 3000/2725          | 146/143    | K          | 830                |
| 11R22.5     | 18PR       | 21.0             | 8.25         | 3250/3000          | 149/146    | K          | 930                |
| 11R24.5     | 16PR       | 21.0             | 8.25         | 3250/3000          | 149/146    | K          | 830                |
| 295/75R22.5 | 16PR       | 23.0             | 9.00         | 3000/2725          | 146/143    | K          | 830                |

*\*This product cannot be used for lorries truck and buses.*

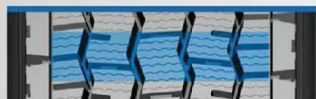




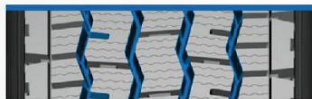
# SDA01



SUITABLE FOR ONLY TRAILER OR SEMI-TRAILER  
ON MID-SHORT DISTANCE TRANSPORTATION OF PAVED ROAD  
AND MIXED ROAD



3D sipe sheet design improves grip



Excellent durability

| SIZE    | PLY RATING | TREAD DEPTH (MM) | STANDARD RIM | LOAD SINGLE / DUAL | LOAD INDEX | SPEED RATE | AIR PRESSURE (KPA) |
|---------|------------|------------------|--------------|--------------------|------------|------------|--------------------|
| 11R22.5 | 16PR       | 22.0             | 8.25         | 3000/2725          | 146/143    | K          | 830                |
| 11R22.5 | 18PR       | 22.0             | 8.25         | 3250/3000          | 149/146    | K          | 930                |
| 11R24.5 | 16PR       | 22.0             | 8.25         | 3250/3000          | 149/146    | K          | 830                |

*\*This product cannot be used for lorries truck and buses.*



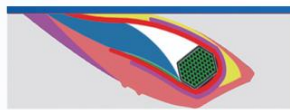
# SD388



SUITABLE FOR ONLY TRAILER OR SEMI-TRAILER  
ON MID-SHORT DISTANCE TRANSPORTATION OF MIXED ROAD



Super smooth driving surface design



Excellent durability and loading performance

| SIZE        | PLY RATING | TREAD DEPTH (MM) | STANDARD RIM | LOAD SINGLE / DUAL | LOAD INDEX | SPEED RATE | AIR PRESSURE (kpa) |
|-------------|------------|------------------|--------------|--------------------|------------|------------|--------------------|
| 295/80R22.5 | 18PR       | 21.0             | 9.00         | 3550/3250          | 152/149    | K          | 900                |
| 295/80R22.5 | 20PR       | 21.0             | 9.00         | 3750/3450          | 154/151    | G          | 930                |
| 315/80R22.5 | 20PR       | 22.0             | 9.00         | 4125/3750          | 157/154    | K          | 900                |
| 315/80R22.5 | 22PR       | 22.0             | 9.00         | 4500/4125          | 160/157    | K          | 930                |

*\*This product cannot be used for lorries truck and buses.*



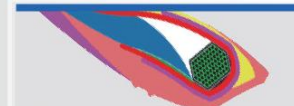
# SD399



SUITABLE FOR ONLY TRAILER OR SEMI-TRAILER  
ON MID-SHORT DISTANCE TRANSPORTATION OF PAVED ROAD  
AND MIXED ROAD



Super smooth driving surface design



Excellent durability and loading performance

| SIZE        | PLY RATING | TREAD DEPTH (MM) | STANDARD RIM | LOAD SINGLE / DUAL | LOAD INDEX | SPEED RATE | AIR PRESSURE (kpa) |
|-------------|------------|------------------|--------------|--------------------|------------|------------|--------------------|
| 12.00R20    | 20PR       | 23.0             | 8.5          | 4000/3650          | 156/153    | G          | 900                |
| 12.00R20    | 22PR       | 23.0             | 8.5          | 4250/3875          | 158/155    | G          | 970                |
| 12R22.5     | 18PR       | 24.0             | 9.00         | 3550/3250          | 152/149    | J          | 930                |
| 295/80R22.5 | 18PR       | 22.0             | 9.00         | 3550/3250          | 152/149    | J          | 900                |
| 295/80R22.5 | 20PR       | 22.0             | 9.00         | 3750/3450          | 154/151    | G          | 930                |
| 315/80R22.5 | 20PR       | 22.0             | 9.00         | 4125/3750          | 157/154    | K          | 900                |
| 315/80R22.5 | 22PR       | 22.0             | 9.00         | 4500/4125          | 160/157    | G          | 930                |

*\*This product cannot be used for lorries truck and buses.*



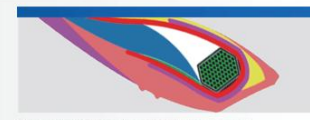
# SD666



SUITABLE FOR ONLY TRAILER OR SEMI-TRAILER  
ON MID-SHORT DISTANCE TRANSPORTATION OF PAVED ROAD  
AND MIXED ROAD



Anti-clamping stone performance



Excellent loading performance

| SIZE    | PLY RATING | TREAD DEPTH (MM) | STANDARD RIM | LOAD SINGLE / DUAL | LOAD INDEX | SPEED RATE | AIR PRESSURE (kpa) |
|---------|------------|------------------|--------------|--------------------|------------|------------|--------------------|
| 12R22.5 | 18PR       | 20.0             | 9.00         | 3550/3250          | 152/149    | K          | 930                |

*\*This product cannot be used for lorries truck and buses.*



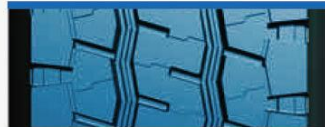
# SDA02



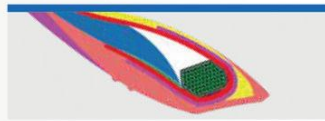
SUITABLE FOR ONLY TRAILER OR SEMI-TRAILER  
ON MID-LONG DISTANCE NATIONAL HIGHWAY TRANSPORTATION



3D siping design improves grip



Excellent handling performance



Excellent durability

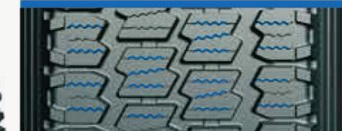
| SIZE    | PLY RATING | TREAD DEPTH (MM) | STANDARD RIM | LOAD SINGLE / DUAL | LOAD INDEX | SPEED RATE | AIR PRESSURE (kpa) |
|---------|------------|------------------|--------------|--------------------|------------|------------|--------------------|
| 11R24.5 | 16PR       | 22.5             | 8.25         | 3250/3000          | 149/146    | K          | 830                |

*\*This product cannot be used for lorries truck and buses.*

# SDA05



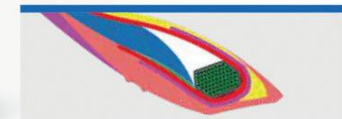
SUITABLE FOR ONLY TRAILER OR SEMI-TRAILER  
ON MID-LONG DISTANCE NATIONAL HIGHWAY TRANSPORTATION



3D siping design improves grip



Excellent handling performance



Excellent durability

| SIZE        | PLY RATING | TREAD DEPTH (MM) | STANDARD RIM | LOAD SINGLE / DUAL | LOAD INDEX | SPEED RATE | AIR PRESSURE (kpa) |
|-------------|------------|------------------|--------------|--------------------|------------|------------|--------------------|
| 225/70R19.5 | 14PR       | 16.0             | 6.75         | 1800/1700          | 128/126    | M          | 760                |
| 225/70R19.5 | 16PR       | 16.0             | 6.75         | 1900/1800          | 130/128    | L          | 830                |
| 225/70R19.5 | 18PR       | 16.0             | 6.75         | 2000/1900          | 132/130    | K          | 900                |

*\*This product cannot be used for lorries truck and buses.*